

V417 VersaHANDLER® Telescopic Tool Carrier

Specifications

Model

V417

Performance

Operating Weight	10648 lb.	4830 kg
Max Rated Capacity	4400 lb.	1995 kg
Max Load Full Height	4400 lb.	1995 kg
Max Load at Full Reach	1850 lb.	839 kg
Auxiliary Hydraulic Flow	22 gpm	85 L
Hydraulic Pressure	3626 psi	235 bar
Lift Height	206 in.	5230 mm
Max Reach	124 in.	3150 mm
Reach at Max Height (24" load center)	47 in.	1193 mm
Bucket Dump Height	175 in.	4443 mm
Reach at Dump Height	31 in.	785 mm
Bucket Dump Angle Full Height	47 degrees	
Maximum Travel Speed		
Low	4.3 mph	7 km/hr.
High	15.5 mph	25 km/hr.
Draw Bar Pull	6970 lbf.	31000 N

Dimensions

Tires	Mitas 14-17.5, TR10	
Length Fork Heel to Rear	156.8 in.	3984 mm
Length Fork Heel to Rear Hitch	162.8 in.	4131 mm
Length Front Tire to Rear	122.2 in.	3103 mm
Wheelbase	90.6 in.	2300 mm
Ground Clearance	11.6 in.	294 mm
Cab Height	78.1 in.	1985 mm
Width	72.4 in.	1840 mm
Tread	58.5 in.	1485 mm
Inside Turning Clearance	59 in.	1500 mm
Wheel Turning Clearance	124.8 in.	3170 mm
Fork Turning Clearance	168.5 in.	4280 mm

Engine

Make/Model	V3800-DI-T Turbo Charged – Tier III	
Fuel/Cooling	Diesel/Liquid	
Cylinders	4	
Net Horsepower	75 hp	56 kW
Rated rpm	2400	
Torque @ 1400 rpm	197.7 ft.-lb.	268 Nm
Displacement	230 cu. in.	3.8 L
Fuel Tank Capacity	24 gal.	91 L

Operation

Four Wheel Drive	Std
Two Speed Hydrostatic Transmission	Std
Steering Modes	Front wheel, four wheel opposed, crab
Creep	Std
Inching	Std
Dynamic Braking	Std
SAPR Brakes	Std

Features

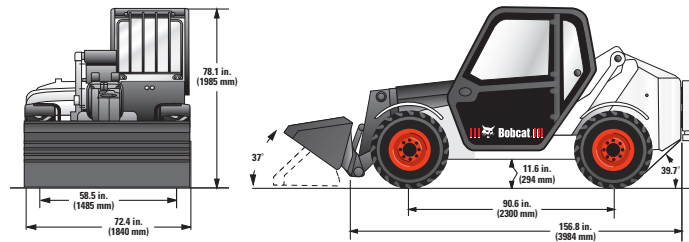
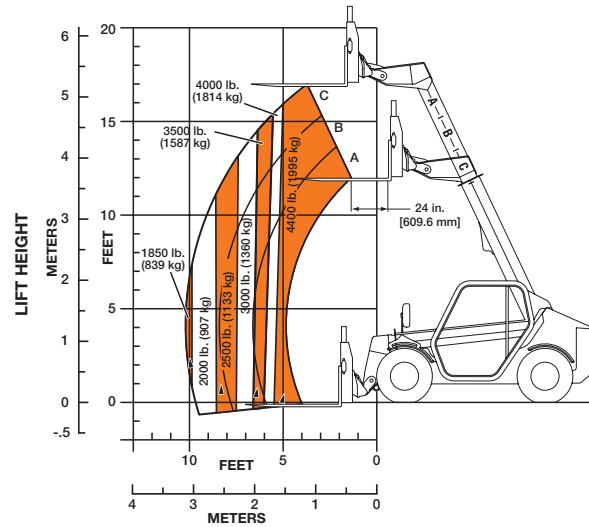
Self Diagnostic Troubleshooting	Std
ROPS/FOPS Approved Cab/Canopy Structure	Std
Cab with Heat and Air Conditioning	Std
Three Way Adjustable Suspension Seat	Std
Front Work Lights	Std
Rear Work Lights	Std
Road Lights	Opt
Pin Style Rear Hitch	Opt
Roof Window Wiper	Opt
Lateral Operator Restraint System (LORS)	Canopy Std
Back Up Alarm	Std
Retractable Seat Belt	Std
Tamper Proof Fuel Cap	Opt
Boom Angle Indicator	Std
Battery Disconnect	Std
12 Volt Accessory Port	Std
Cup Holder	Std

Attachment Capabilities

Bob-Tach Attachment Mounting System	Std	
Auxiliary Hydraulics with Quick Couplers	Std	
Standard Flow	22 gpm	85 L
Hydraulic Pressure	3626 psi	235 bar
Pressure Release Lever	Std	
Fingertip Auxiliary Control	Std	
Fingertip Boom and Tilt Control	Std	
Attachment Control Kit (7 pin connector)	Std (on cab only)	
Work Mode	Std	
Boom Float	Std	

Warranty

1 year/2000 hr warranty	Std
2 year/ 3000 hr warranty	Opt



Pick a job... ANY JOB.

The VersaHandler® telescopic tool carrier does much more than just pick and place materials; it gives you the best of both worlds: the extended reach and great lift capacity of a telehandler with the versatility advantage of using more than 20 different attachments. Thanks to the standard Bob-Tach™ attachment mounting system, you can quickly change attachments and vastly increase the utilization of your machine. Keep the VersaHandler TTC working with the Brushcat™ rotary cutter, sweeper, soil conditioner, trencher, auger, grapple, bale fork, bucket and more.

NOTE - Where applicable, dimensions are in accordance with Society of Automotive Engineers (SAE) and ISO standards. Specifications and design are subject to change without notice. Pictures of Bobcat units may show other than standard equipment. All dimensions are given for loader equipped with standard tires. All dimensions are shown in inches. Respective metric dimensions are enclosed by parentheses. Bobcat Company complies with the requirements of ISO 9001 as registered with BSI.

Bobcat® and the Bobcat logo are registered trademarks of Bobcat Company in the United States and various other countries. ©Bobcat Company. All Rights Reserved.



Bobcat®

Bobcat Company • P.O. Box 6000 • West Fargo, ND 58078

Printed in U.S.A.

Kn-5M-113-#24708-F

Bobcat Attachments for this model:

- Angle Broom*
- Auger
- Buckets
- Combination Bucket
- Dozer*
- Floating Pallet Forks
- Grapple
- Landscape Rake
- Mower
- Pallet Fork
- Rock Bucket
- Root Grapple
- Brushcat™
- Rotary Cutter
- Scraper
- Seeder
- Snow Blade
- Snowblower*
- Snow Pusher
- Snow V-Blade*
- Soil Conditioner
- Sweeper
- Tiller
- Tilt Carriage Frame
- Trencher
- Truss Boom

*Requires 7-Pin Attachment Control Kit



Printed on 10% recycled paper

B-1834 (1/13)