

XR842 Roller Boom

Technical Specifications



Heavy Duty Rollers
for Long Life and Low
Maintenance

Capacity: 8,000 lbs
Lift Height: 42'
Forward Reach: 28'10"
Power Shift Transmission
World Class 360° Visibility



Dual Hydraulic
Cylinders for Precision
Fork Leveling



XTREME

TELEHANDLERS

1415 W. Bonanza Rd., Las Vegas, NV 89106
www.XtremeManufacturing.com


(702) 636-2969
(800) 497-1704

10-5-3-2
WARRANTY

Performances

	Capacity	8,000 lbs
	Lift Height	41'5"
	Forward Reach	28'10"
	Frame Leveling L/R	11°
	Operating Weight	26,850 lbs

Power Train

	Engine	Perkins 99.5 hp Tier 3
	Fuel Capacity	48 gal
	Transmission	Dana 3-Speed
	Axle	Dana/Spicer
	Brakes	Inboard Wet Disc
	Parking Brake	SAHR

Tires

	Tires (Standard Eq)	Foamed Filled 13.00 x 24 E3
---	---------------------	--------------------------------

Hydraulics

	GPM	39
	PSI	3,500
	Hydraulic Oil Capacity	45 gal

Dimensions

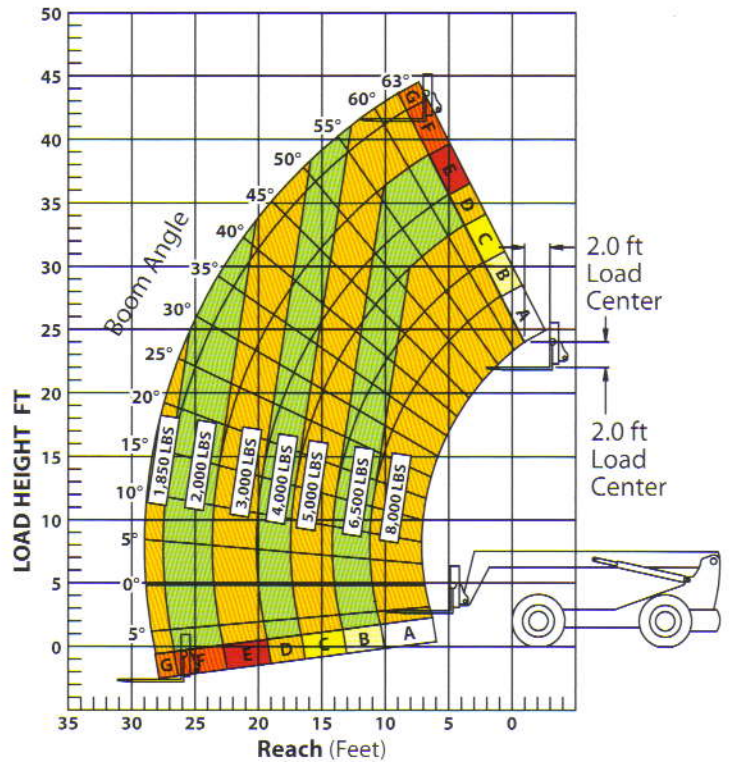
	Length to fork face	20'11"
	Width	101"
	Height	7'11"
	Wheel Base	120"
	Ground Clearance	16.5"
	Turning Radius	12'

Standard Equipment


-  Heavy-duty Frame/Chassis and Roller Boom
- Melonite Pins and Rollers
- Auxillary Hydraulics
- Direct Dual Control Hydraulic Valve Actuation
- Robust Wiring, No Spades, No Pins
- Rear Axle Stabilization (RAS)
- Center Inline Engine Drive Train
- Full-time Planetary 4-Wheel Drive
- Steering - 4-Wheel Circle, Crab, 2-Wheel Front
- Back-Up Alarm
- Open ROPS
- Adjustable Hydraulic Operator Controls
- Suspension Seat
- Quick Attach (Common Fit)
- Xtreme Service Accessibility

XR842 LOAD CHART

Standard Fork Carriage / Foam Filled Tires



Attachments

-  Standard Carriage - 48" or 72"
- + 10° Side Tilt Carriage - 48" or 72"
- + 45° Swing Carriage - 52" or 72"
- Pallet Forks - 2.25" x 4" x 48"
- Lumber Forks - 1.75" x 7" x 60"
- Block Forks - 2" x 2" x 48"
- Utility Bucket - 1.25 cu yd
- Concrete Hopper - 0.5 cu yd, or 1.00 cu yd
- Truss Boom - 12' or 15'
- Wallboard/Sheet Material Handler

Accessories and Options

-  Cab Enclosed
- Limited Slip Differential
- 13.00 x 24 G2 Tires
- A/C
- 4th Steer Mode, Rear Pivot
- Work Light Package
- Rotating Beacon
- Pintle Hook
- Running lights, brake & turn signals

Long-Life Rollers



Xtreme 360° Visibility



Operator Controls



Boom Angle Indicator



Constant improvement and engineering progress make it necessary that we reserve the right to make specification, equipment and price changes without notice.